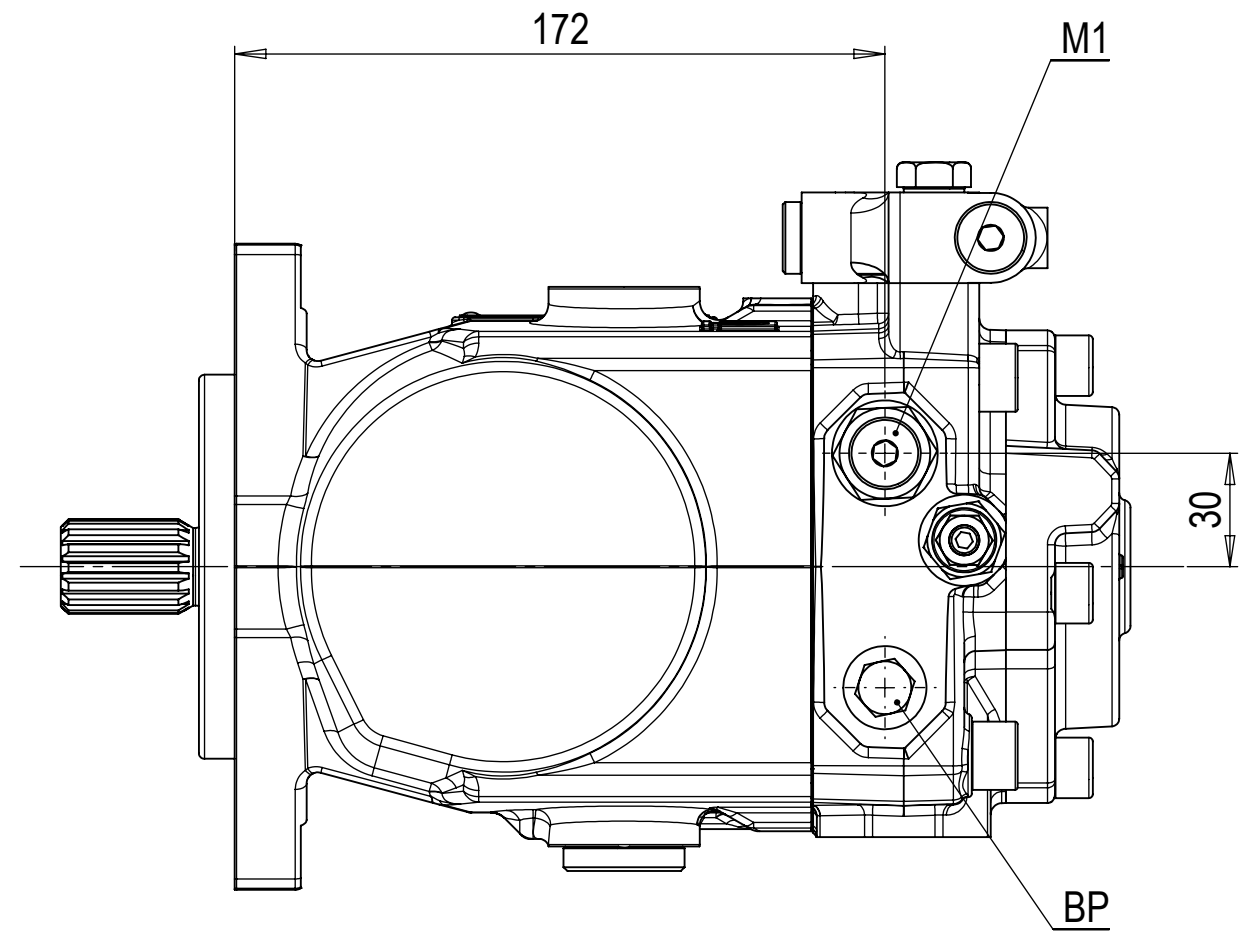
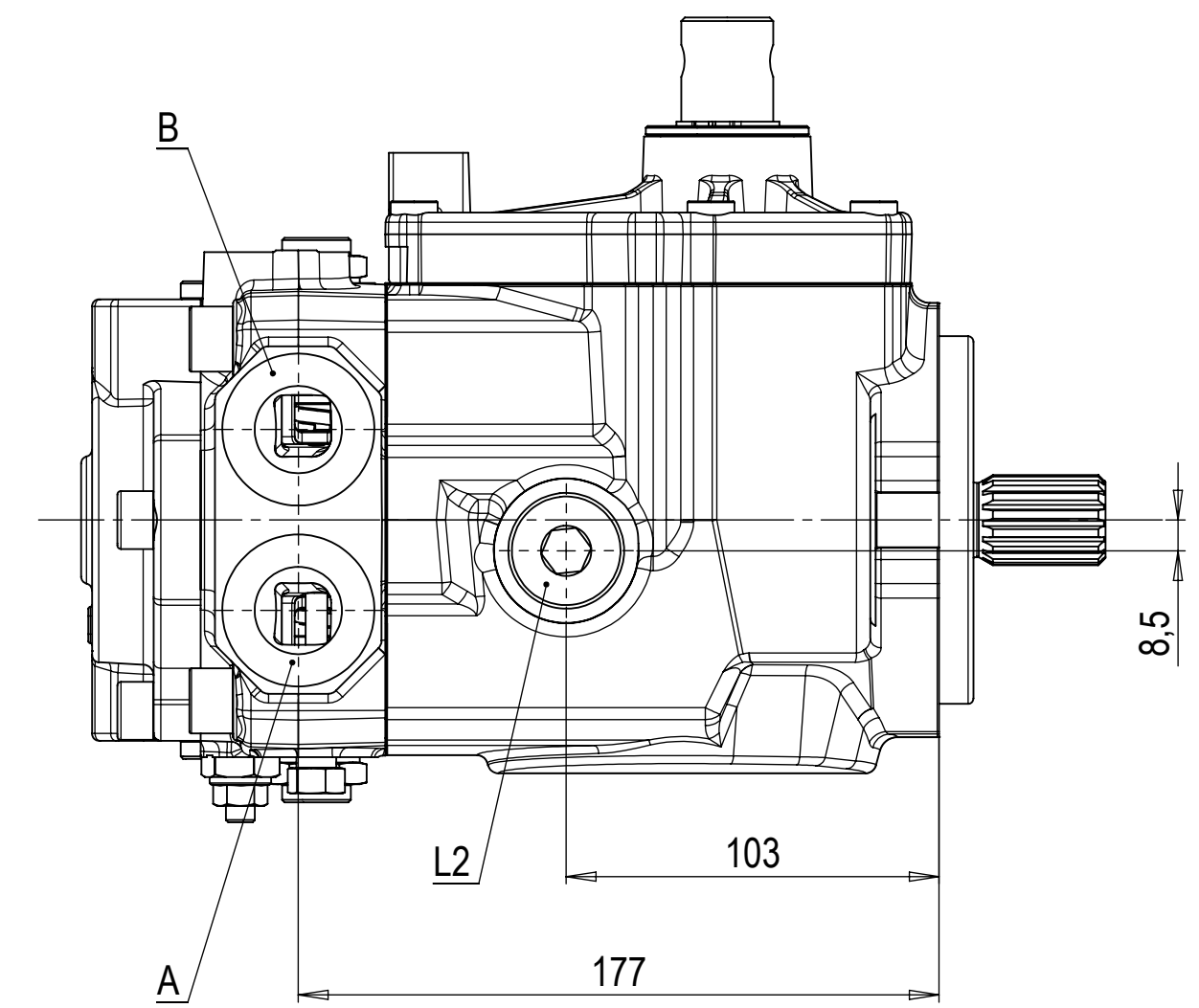
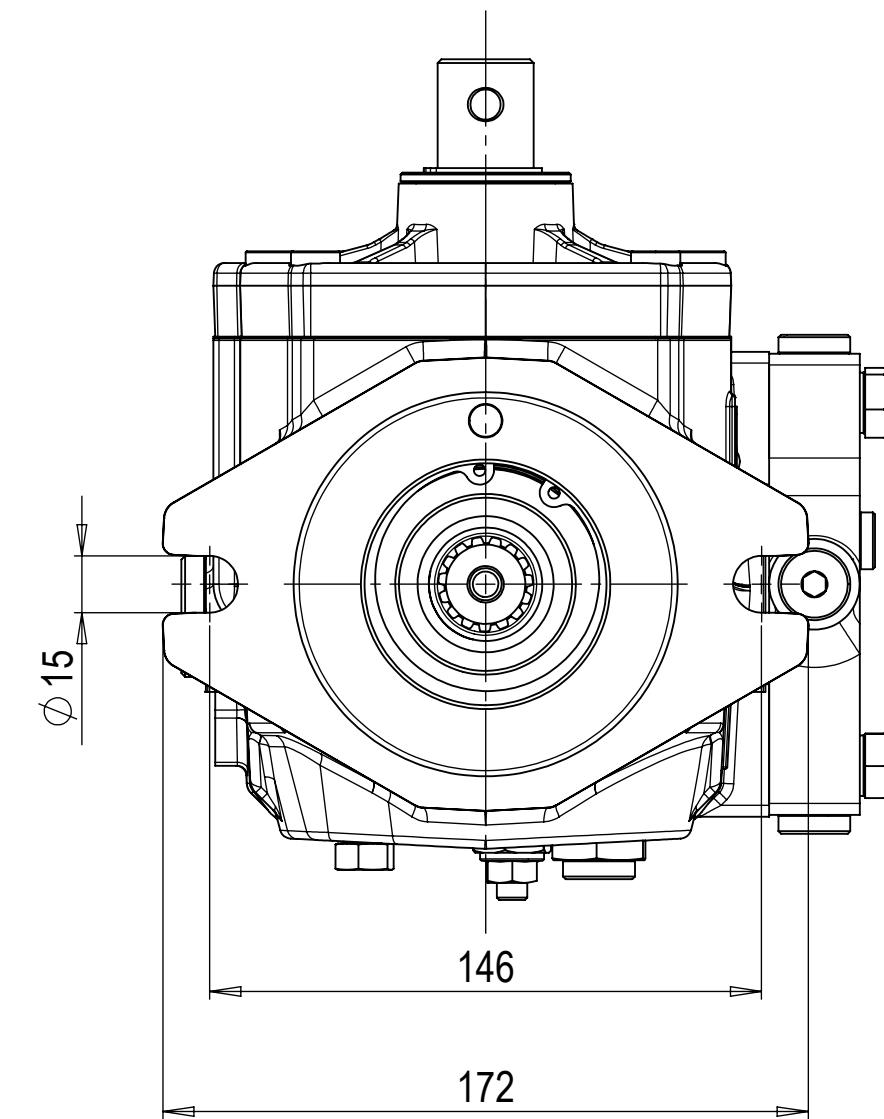
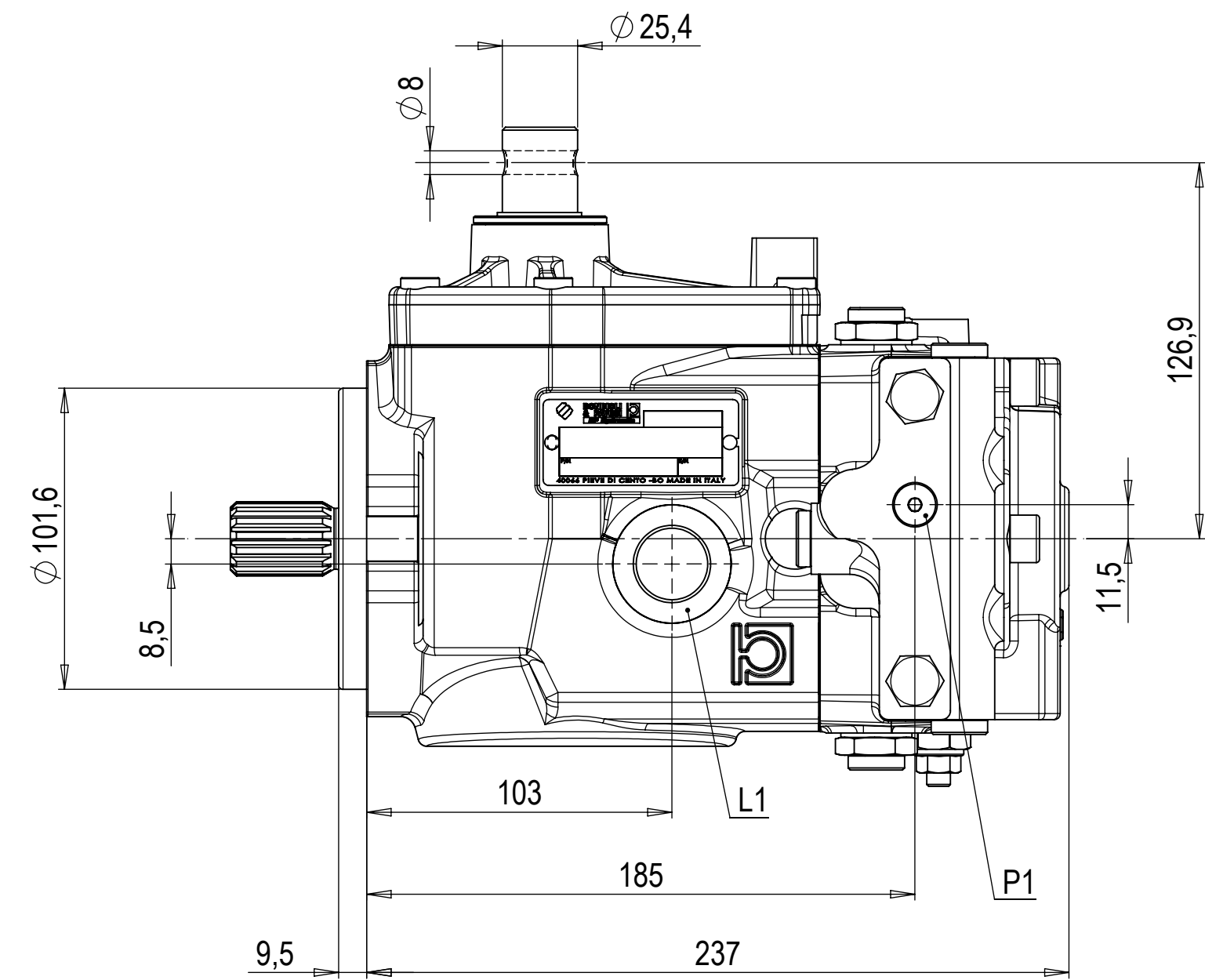
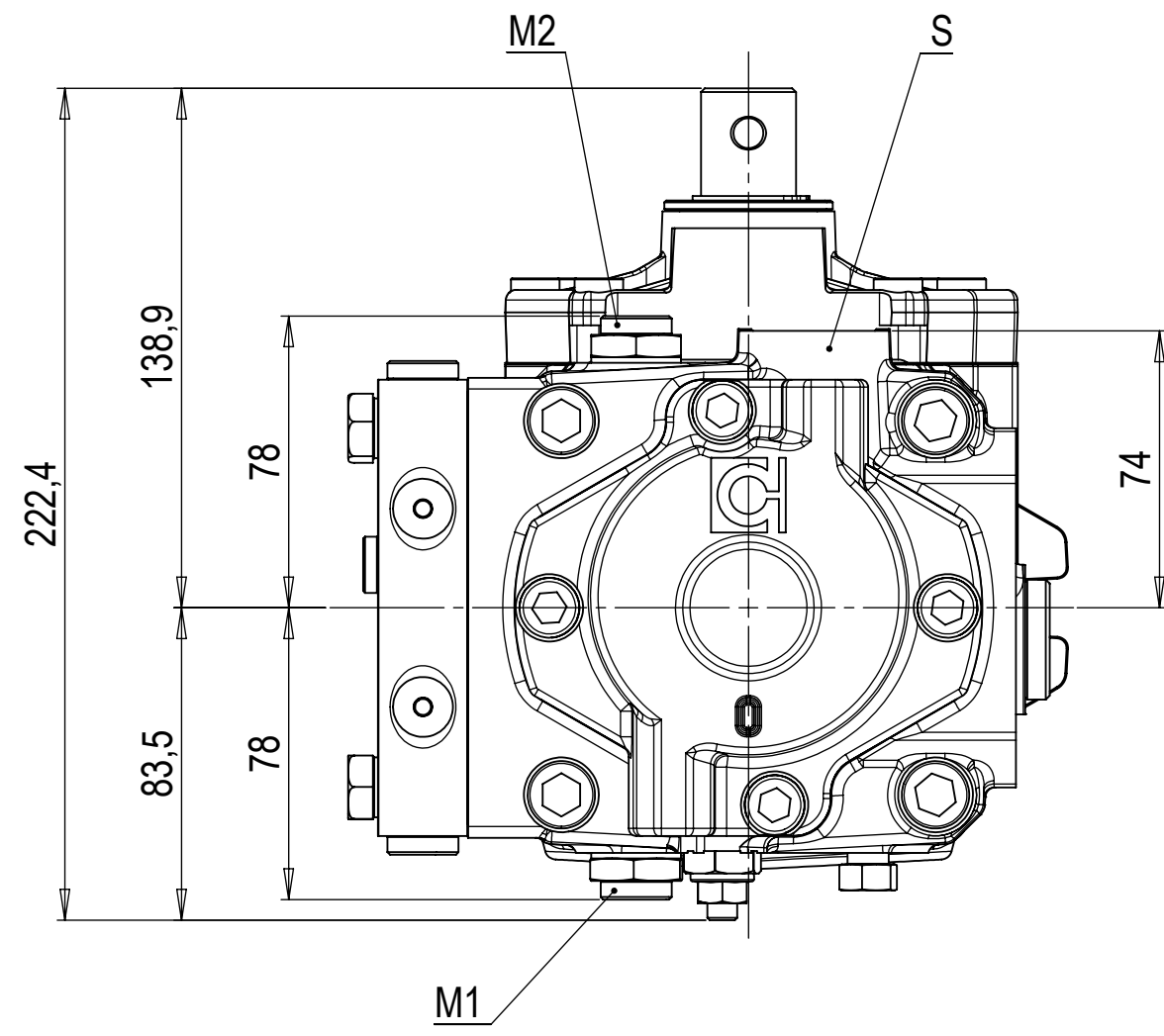
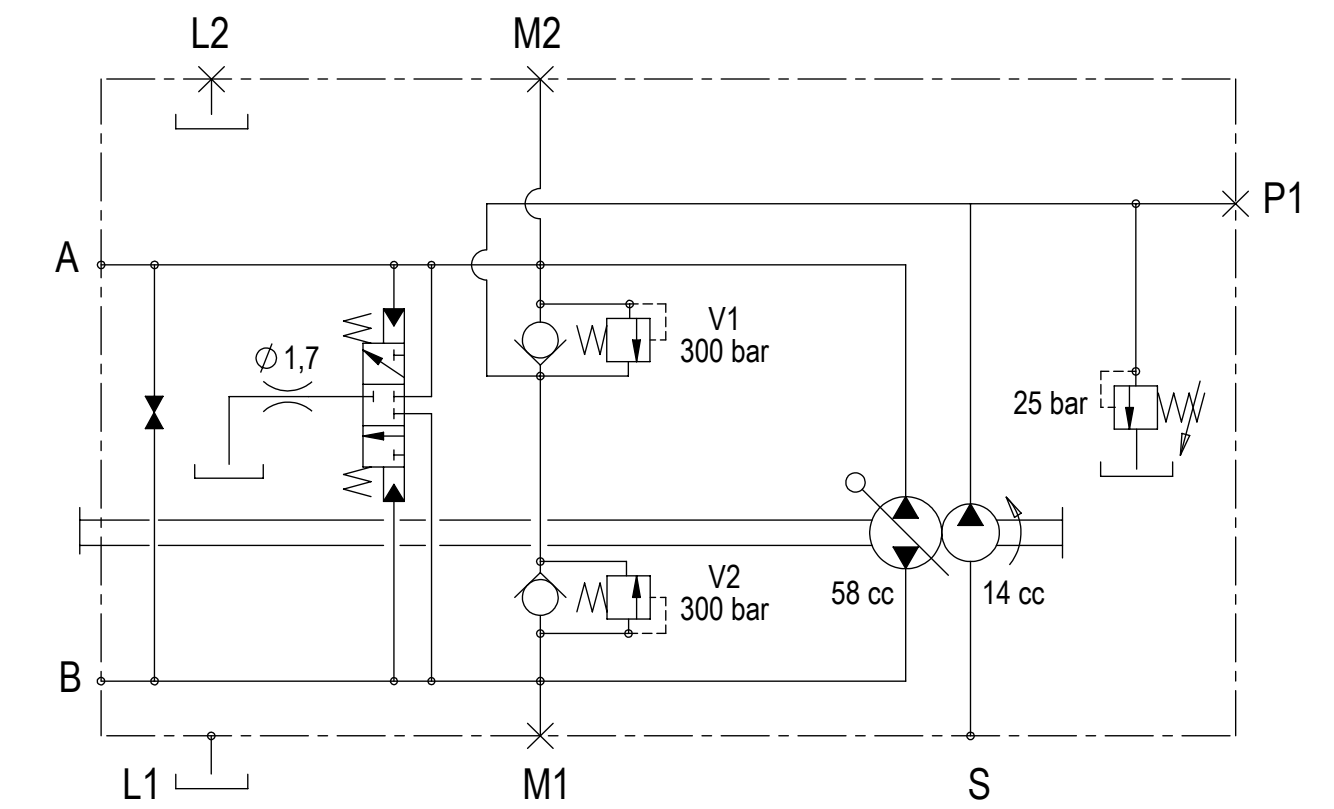


CILINDRATA NOMINALE NOMINAL DISPLACEMENT	58 (cm ³ /g)
CILINDRATA POMPA DI ALIMENTAZIONE CHARGE PUMP DISPLACEMENT	14 (cm ³ /g)
TARATURA VALVOLA DI ALIMENTAZIONE CHARGE PUMP RELIEF VALVE SETTING	25 ± 2 (bar)
TARATURA VALVOLE DI MASSIMA MAIN RELIEF VALVES SETTING (V1,V2)	300 (bar)
INCLINAZIONE OSCILLANTE IN CILINDRATA MAX SWASH PLATE TILTING ANGLE AT MAX DISPLACEMENT	18°

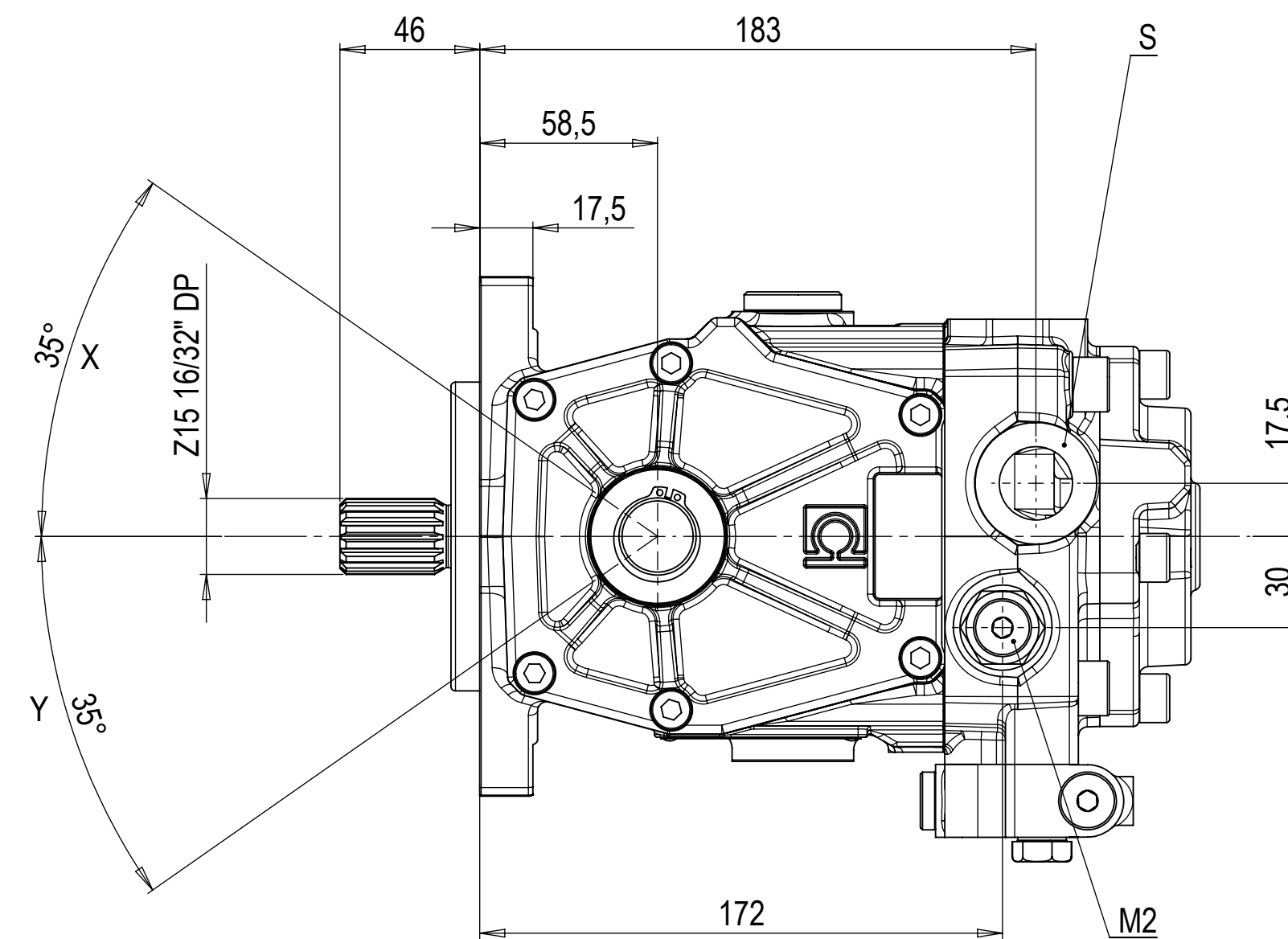


ROTAZIONE ROTATION	LEVA COMANDO CONTROL LEVER	MANDATA OUTPUT
DESTRA RIGHT	X	B
	Y	A



PRESSIONE (bar) PRESSURE (bar)		
CONTINUA CONTINUOUS	INTERMITTENTE INTERMITTENT	PICCO PEAK
250	300	400

VELOCITA' DI ROTAZIONE (min ⁻¹) SPEED (min ⁻¹)	
MAX	MIN
3600	500



A,B	Utilizzo Use	3/4" GAS	Tappo plastica Plastic plug
L1	Drenaggio Drain	3/4" GAS	Tappo plastica Plastic plug
L2			Tappo acciaio Steel plug
S	Aspirazione Feeding pump inlet	3/4" GAS	Tappo plastica Plastic plug
M1,M2	Prese manometri Manometer intakes	1/4" GAS	Tappo acciaio Steel plug
P1	Prese di pressione Pressure intakes	1/8" GAS	Tappo acciaio Steel plug
BP	Valvola By-Pass By-Pass valve		

DERIVATO DA / DERIVED FROM	FOGLIO N. / SHEET N. 1 / 1	DISEGNATO / DESIGNED BY tartari	
SOSTITUISCE IL / IT REPLACED	COMUNICAZIONE / NOTICE N. H13671	PESO (kg) / WEIGHT (kg)	
SOSTITUITO DAL / REPLACED FROM	NOTE / NOTES	SCALA / SCALE 1:2	FORMATO / FORMAT 840x594
DESCRIZIONE POMPA M4PV58-58 M 1 30 B R 3BGVR	DESCRIZIONE PUMP M4PV58-58 M 1 30 B R 3BGVR	CODICE / PART NUMBER HP3605811305333	REV.